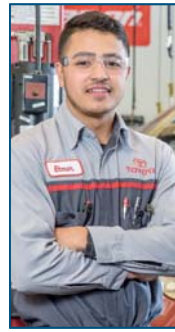




Implementing AB 705 at Citrus College: Practices and Effectiveness



Presented at the Community College League of California 2019 Annual Convention
Riverside Convention Center, November 23, 2019



AB 705 Premise

- AB 705 requires direct access to transfer-level math and English for all students
- AB 705 requires the use of multiple measures for placing students into transfer-level math and English courses
- AB 705 allows colleges to develop co-requisite/concurrent support at the transfer-level
- Citrus College successfully implemented AB 705 in 2018 using a co-requisite/concurrent support model that incorporates new pedagogical approaches
- AB 705 implementation at Citrus College was made possible because of campus-wide collaboration and coordination across all levels



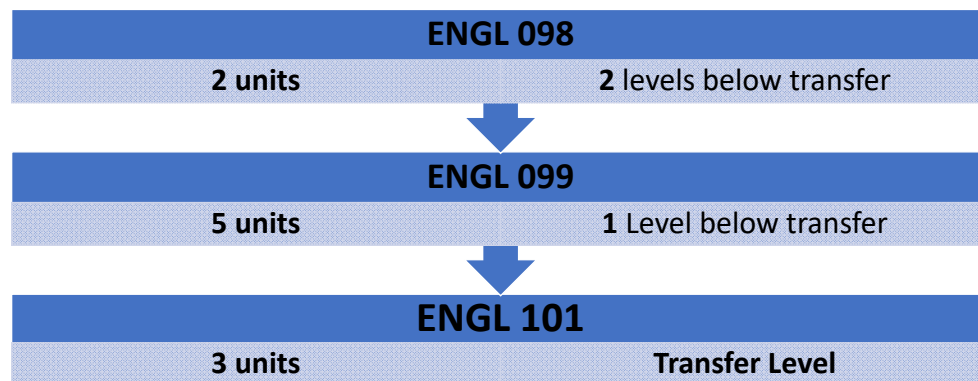
AB 705 Work at Citrus College: English

What we have done in support of students and faculty –

- Curriculum, Sequencing, and Pedagogy
- Classroom Support



Citrus College English Sequence prior to Fall 2018





Citrus College English Sequence for Fall 2018

ENGL 101 **4 Units**

- Transfer Level

ENGL 101E **5 Units**

- Transfer Level+1 Unit Co-Req



AB 705 Work at Citrus College: **English**

What we have done in support of students and faculty

- Curriculum, Sequencing, and Pedagogy
- **Classroom Support**



English: Innovative Strategies

- Classroom Redesign
- Faculty Leads
- Embedded Tutors in co-requisite course
- Professional development on and off campus
- Scheduling



CCLC 2019 Annual Convention, November 23, 2019

6



Data on Embedded Tutoring (ET) and Writing Center (WC)

Fall 2018 Offerings:

- **45** sections of English 101E: **22** sections had embedded tutors
- **44** sections of English 101: **8** sections had embedded tutors

Findings:

- Embedded Tutors: Students from a 101E class with an ET visited the WC at a higher rate -- **(53% usage compared to 18%)**
- Writing Center: Students who visited the WC at least once had a higher success rate **(73% success rate compared to 59%)**
- Students who attended the WC had the highest retention rate for both 101 and 101E **(96% retention rate)**

CCLC 2019 Annual Convention, November 23, 2019

7



More on Embedded Tutors (ET) and the Writing Center (WC)

Instructor Survey:

- **88%** recommend ET to colleagues, **85%** incorporated WC into the class pedagogy, and **96%** found having a tutor is very helpful

Student Survey:

- **58%** had a clearer understanding of the course material and **61%** said ET encouraged them to use WC

Conclusion: ET → WC = Higher success rates



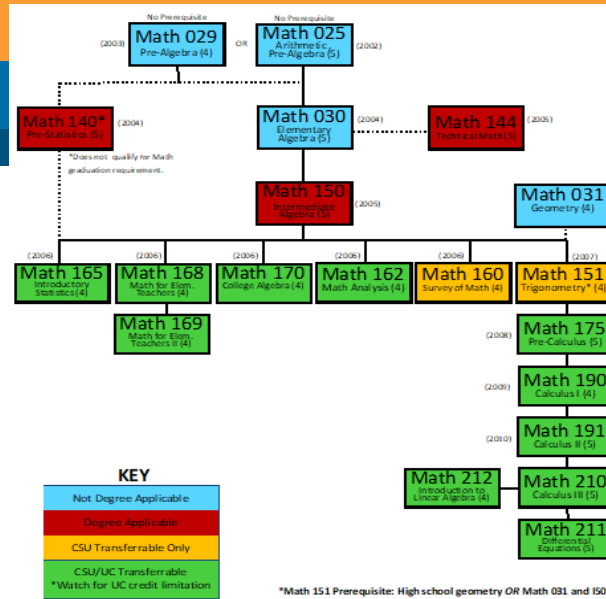
AB 705 Work at Citrus College: **Math**

What we have done in support of students and faculty –

- **Curriculum, Sequencing, and Placement**
- Classroom Redesign, Pedagogy, and Support



Math Sequence: Prior to Fall 2018

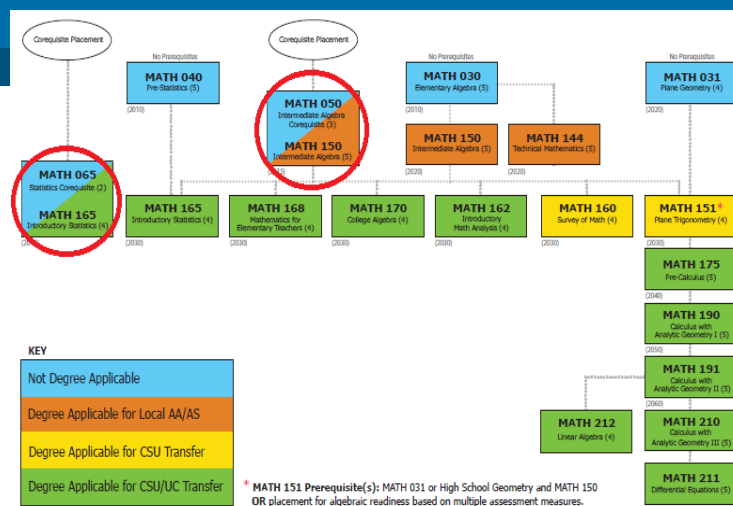


CCLC 2019 Annual Convention, November 23, 2019

10

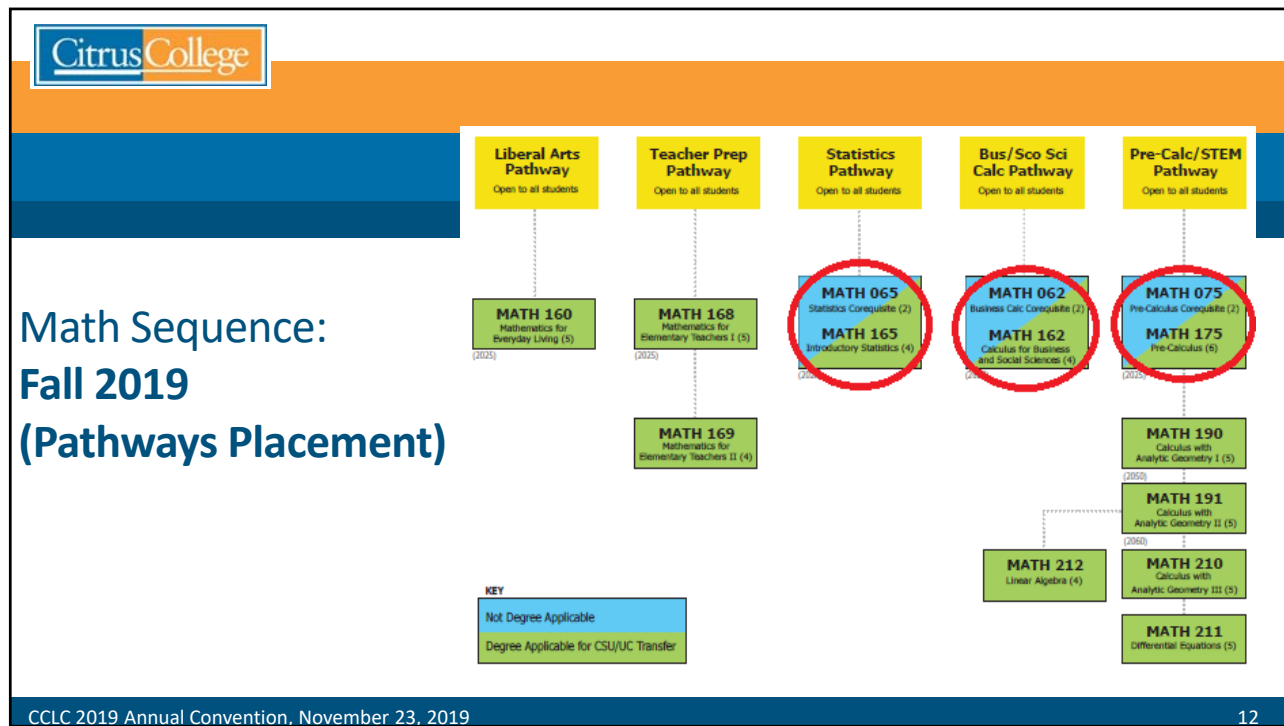


Math Sequence: Fall 2018



CCLC 2019 Annual Convention, November 23, 2019

11



12

Citrus College

AB 705 Work at Citrus College: **Math**

What we have done in support of students and faculty –

- Curriculum, Sequencing, and Placement
- **Classroom Redesign, Pedagogy, and Support**

CCLC 2019 Annual Convention, November 23, 2019

13



AB 705 Work at Citrus College: Math

- Classroom Redesign
 - New pod furniture
 - Whiteboards on all walls
 - Portable whiteboards
 - Manipulatives: beads, cards, dice, snap cubes, tape measures, TI-84 calculator
 - Magnets
 - PAL Carts



CCLC 2019 Annual Convention, November 23, 2019

14



CCLC 2019 Annual Convention, November 23, 2019

15



CCLC 2019 Annual Convention, November 23, 2019

16



CCLC 2019 Annual Convention, November 23, 2019

17



CCLC 2019 Annual Convention, November 23, 2019

18



AB 705 Work at Citrus College: Math

- **Pedagogy**
 - Classroom activities to **contextualize/reinforce learning**
 - All students working at the white boards
 - Think-Pair-Share
 - Uber Driving
 - Classroom activities to **form an equitable classroom community**
 - Group Cards/Switch groups 3-4 time *each class day*
 - Campus Scavenger Hunt

CCLC 2019 Annual Convention, November 23, 2019

19



AB 705 Work at Citrus College: Math

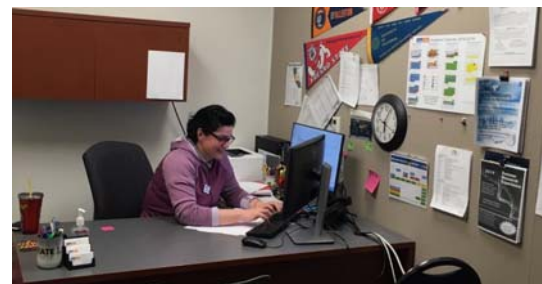
- **Support**

- Belief in Student Capacity
- Growth Mindset/Metacognitive Assignments
- Counseling 1-hour classroom visit
 - Time Management
 - Adjustment to college
- Adjunct Faculty as Embedded Tutors
- Faculty Community of Practice
- Corequisite Courses study groups in the STEM Center (led by Adjunct Faculty or Student Tutor)



CCLC 2019 Annual Convention, November 23, 2019

20



CCLC 2019 Annual Convention, November 23, 2019

21



AB 705 Work at Citrus College

Recommended Student Videos:

[The Power of Expectation](#) – Belief in student capacity (show to both students and faculty)

[Broken Escalator](#) – Help students believe in their own capacity



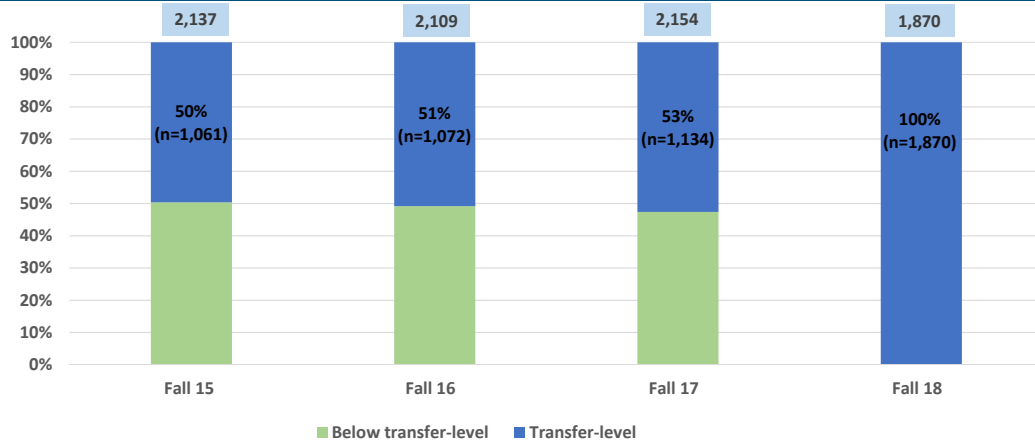
AB 705 Work at Citrus College

What we've done in support of students and faculty –

- English Support
- Mathematics Support
- **Data and Results**



Access to Transfer-Level English: First-time Enrollment

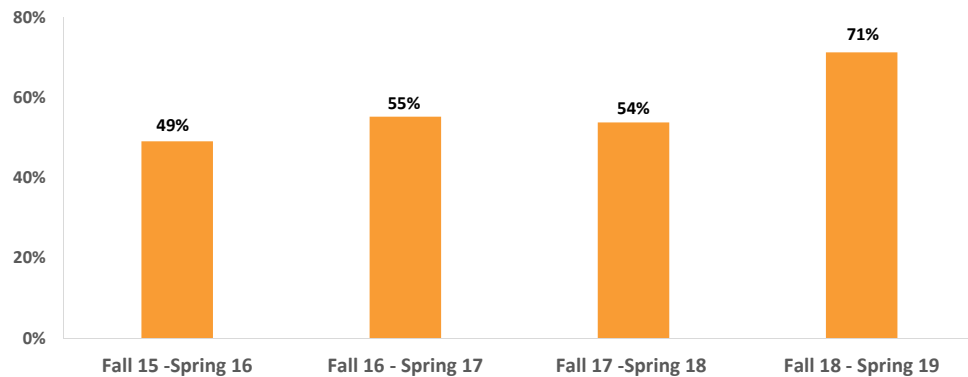


CCLC 2019 Annual Convention, November 23, 2019

24



One-Year Throughput Rate in Transfer-Level English

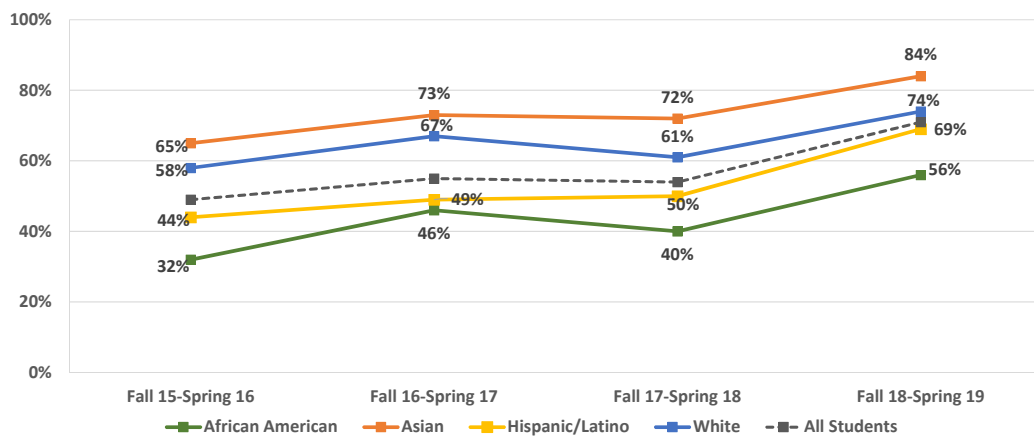


CCLC 2019 Annual Convention, November 23, 2019

25



Equity Data by Ethnicity: One-Year Throughput Rate in Transfer-Level English

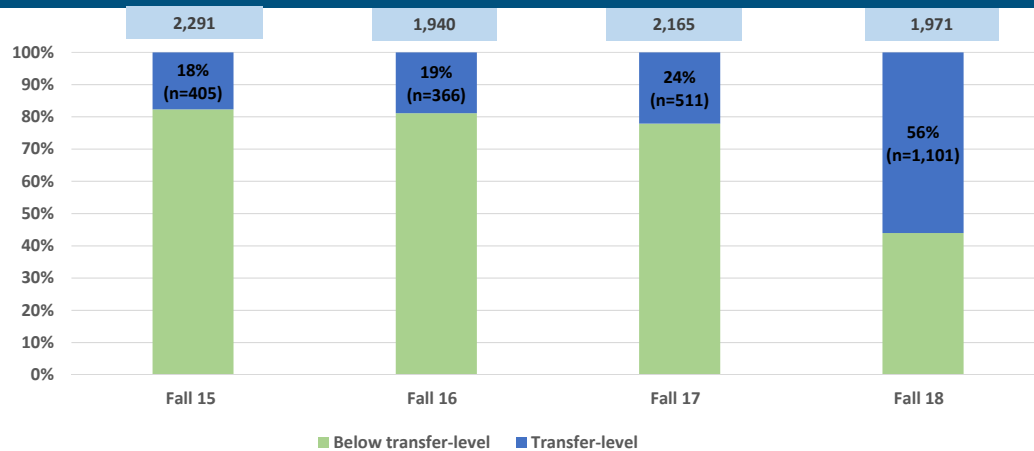


CCLC 2019 Annual Convention, November 23, 2019

26



Access to Transfer-Level Math: First-time Enrollment

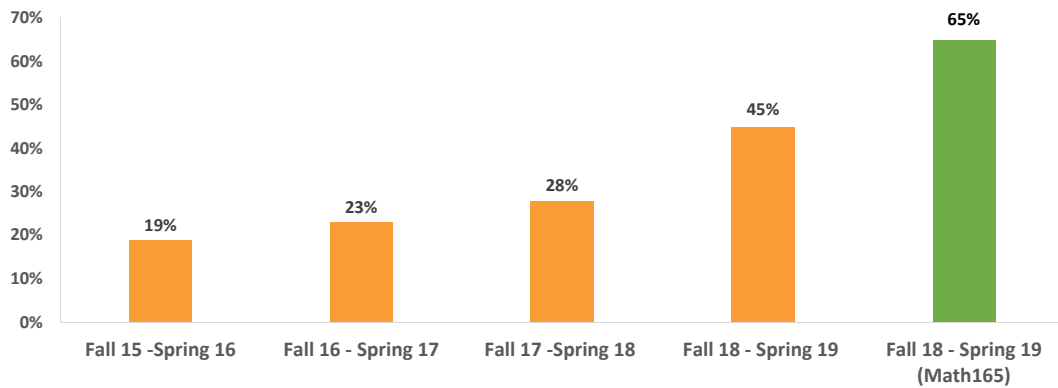


CCLC 2019 Annual Convention, November 23, 2019

27



One-Year Throughput Rate in Transfer-Level Math

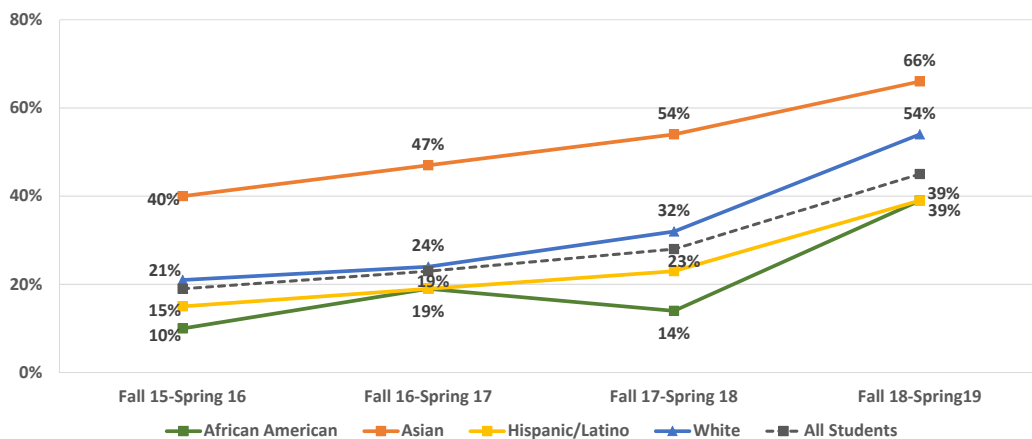


CCLC 2019 Annual Convention, November 23, 2019

28



Equity Data by Ethnicity: One-year Throughput Rate in Transfer-Level Math



CCLC 2019 Annual Convention, November 23, 2019

29



Thank You and Questions

Becky Rudd, English Faculty
r Rudd@citruscollege.edu

Victoria Dominguez, Mathematics Faculty
vdominguez@citruscollege.edu

Gina Hogan, Dean of Language Arts and Library
ghogan@citruscollege.edu

Michael Wangler, Dean of Mathematics and Business
mwangler@citruscollege.edu

Lan Hao, Director of Institutional Research, Planning, and Effectiveness
lhao@citruscollege.edu